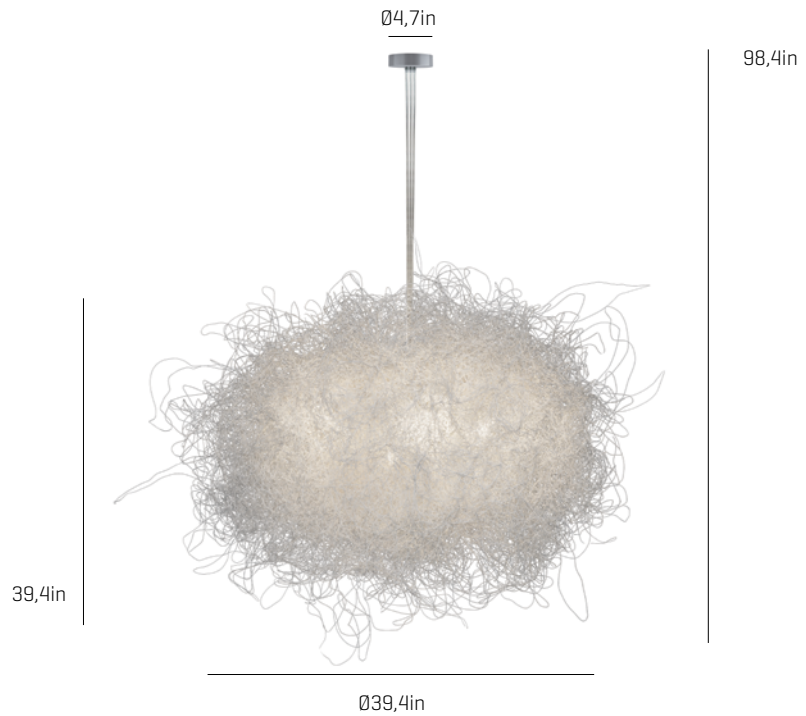


Pili composition

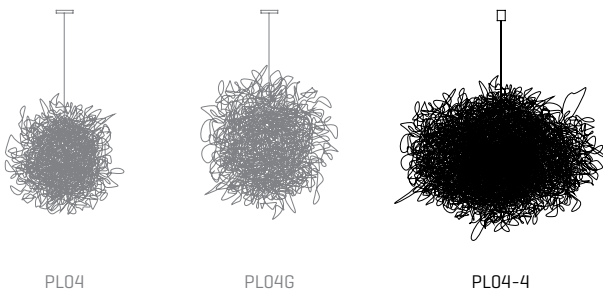
ref. **PL04-4**

Lampshades
refs. 4xPL04G

Pendant lamp



Pili Collection



MATERIAL FINISHES

LAMPSHADE

Painted stainless steel thread

One color




CANOPY AND CABLE

Steel gloss nickel-plated

Transparent cable


LIGHT SOURCE

120V - 60Hz

 E26 Med. - Max. 4x100 W

 E26 LED - Max. 4x13

upon request:

 GU24 - Max. 1x23 W

OTHER TECHNICAL DATA

PACKAGING

31,5x47,2x45,3in

38,8lb

ELECTRICAL FEATURES



CERTIFICATIONS



Pili

ref. **PL04-4**

Suitable for indoor use, at 25°C

Apta para uso interior a temperatura ambiente de 25°C

Box contains | Contenido de la caja:

A - Lampshade | Tulipa [4]

B - Holding piece | Pieza de sujeción [1]

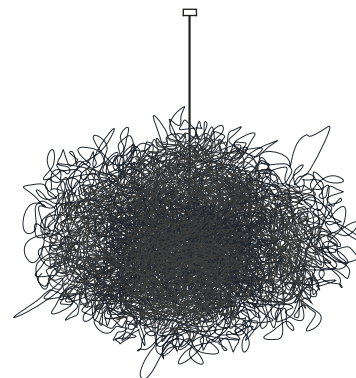
C - Lampholder | Portalámparas [4]

D - Security screws | Tornillos de seguridad [2]

E - Electrical disposal | Ficha [3]

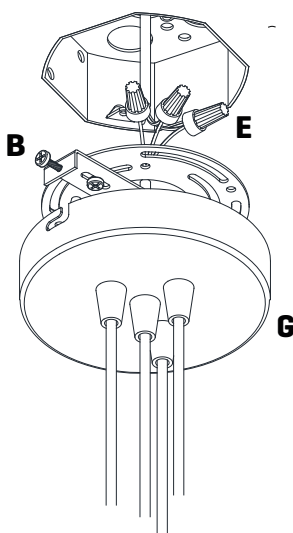
F - Screws | Tornillos [2]

G - Canopy | Florón [1]



SAFETY NOTE: Switch off mains supply before commencing installation

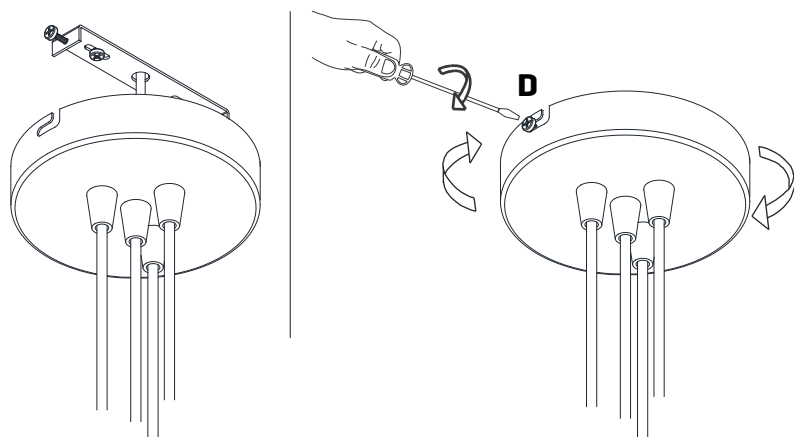
INDICACIÓN DE SEGURIDAD: Desconecte la alimentación eléctrica antes de empezar con la instalación



1

Pass the electric cables to the interior and do the electric connection inside the octagon box, please follow the instructions.

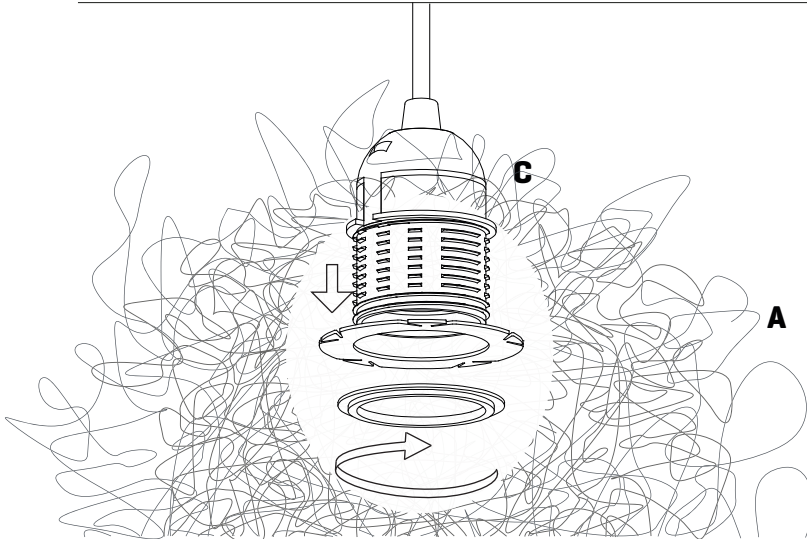
Passar los cables eléctricos al interior y hacer la conexión eléctrica dentro de la caja de conexiones, siguiendo las instrucciones.



2

Insert the canopy in the holding piece and tight the security screws.

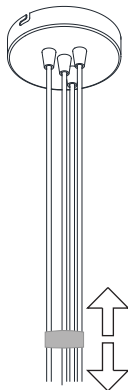
Encajar el florón en la pieza de sujeción y apretar los tornillos de seguridad.



3

Insert the lampshade into the lampholder and tighten the nut.

Encajar la tulipa en el portalámparas y apretar la tuerca.



4

Once you have all the lampshades placed in your lampholder, slide the metal ring to join the tulips.

Una vez tenga todas las tulipas colocadas en su portalámparas, deslice la anilla de metal para juntar las tulipas.