

Kite

ref. **KT04-D**

DIMMABLE

Pendant lamp

Lámpara colgante

SIMETECH® by arturo alvarez

INTERIOR
DESIGN
**BEST
OF
YEAR 2014**

Innovative translucent shading
lighting solution

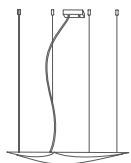
9cm | 3,5in



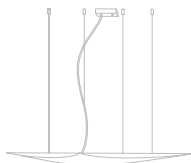
150cm | 59,1in

92 x 85cm | 36,2 x 33,4in [diagonal]

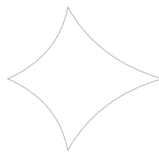
Kite Collection



KT04



KT04G



KT06



KT06G

MATERIAL FINISHES

MATERIALES Y ACABADOS

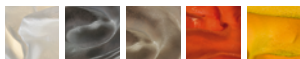
LAMPSHADE

TULIPA

SIMETECH® by arturo alvarez

One color to choose

Un color a elegir



Painted steel

Acero pintado

SUPPORT AND CABLE

SOPORTE Y CABLE

Stainless steel

Acero inoxidable

Transparent cable

Cable transparente

LIGHT SOURCE

FUENTE DE LUZ

230V - 50Hz



2GX13 - Max. 1x55 W

Dimming system: DALI / Switch DIM

ENERGY EFFICIENCY

EFICIENCIA ENERGÉTICA

from A+ to B

desde A+ a B

OTHER TECHNICAL DATA

OTROS DATOS TÉCNICOS

PACKAGING

EMBALAJE

71x71x13cm | 28x28x5,1in

7kg | 15,4lb

ELECTRICAL FEATURES

CARACTERÍSTICAS ELÉCTRICAS



CERTIFICATIONS

CERTIFICACIONES



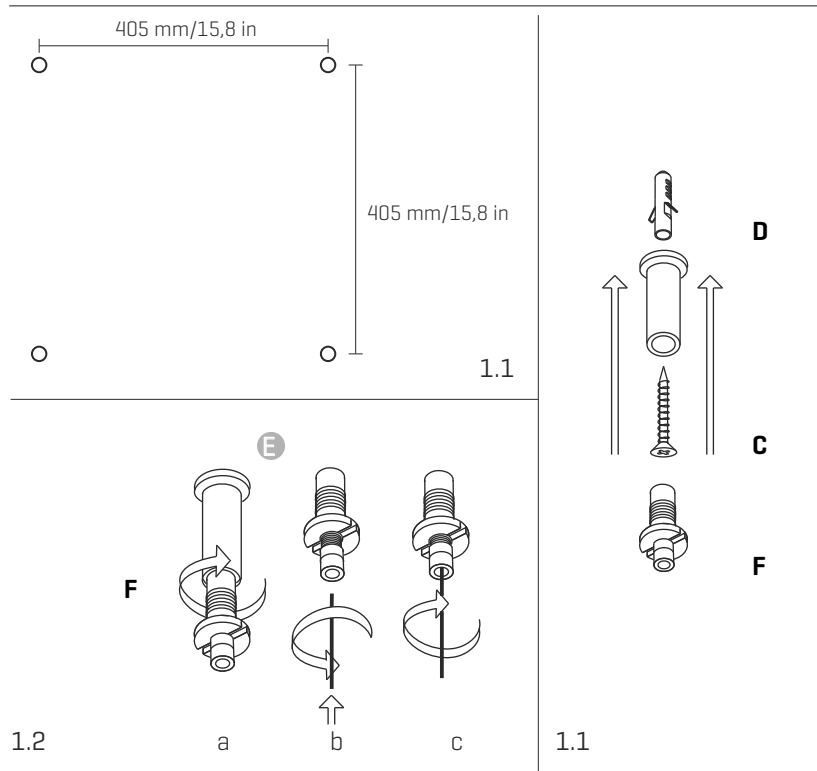
Box contains | Contenido de la caja:

- A** - Lampshade | Tulipa [1]
- B** - Frame | Soporte [1]
- C** - Screws | Tornillos [4]
- D** - Wall Plugs | Tacos [4]

- E** - Electrical disposal | Ficha [3]
- F** - Tie Rod | Tensor [4]

ref. **KT04-D**

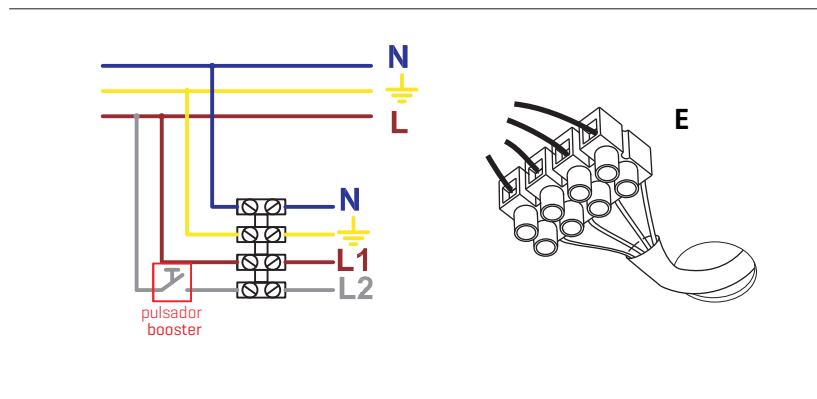
Suitable for indoor use, at 25°C
Apta para uso interior a temperatura ambiente de 25°C



1

1.1. Drill the holes, fit the wall plugs into them and fix the metallic frame to the ceiling.
1.2. a) Screw the tie rod. b) Loosen the security nut and introduce the steel wire. c) Tighten the security nut. In order to remove the cable from the tension loosen the nut, to push it upwards and to throw of the cable.

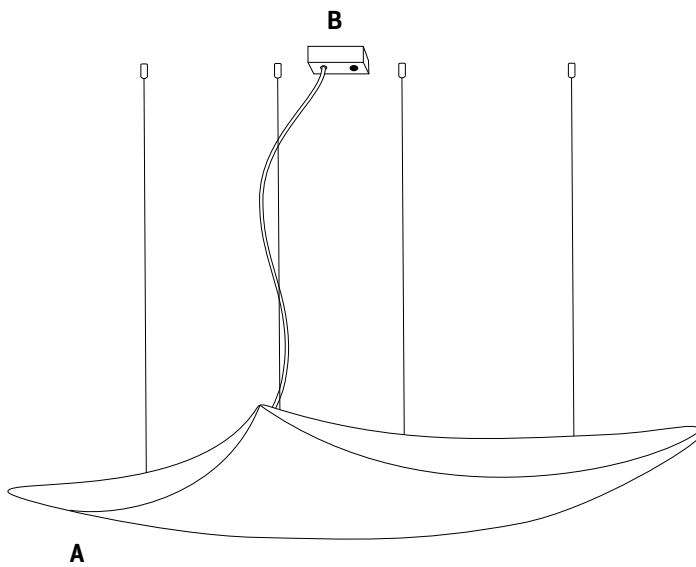
1.1. Hacer los agujeros, colocar los tacos y fijar la pieza metálica al techo.
1.2. a) Enroscar el tensor. b) Aflojar la tuerca de seguridad e introducir el cable de acero. c) Apretar la tuerca de seguridad. Para sacar el cable del tensor aflojar la tuerca, empujarla hacia arriba y tirar del cable.



2

Conect the electrical cables using the wire conections.

Conectar los cables eléctricos usando las piezas de conexiones.



3

Once you complete all the steps, this image should be the final appearance.

Una vez completados todos los pasos, esta imagen sería el aspecto final de la lámpara.