

Kite

ref. **KT06G-D**

DIMMABLE

Wall sconce & ceiling flush mount

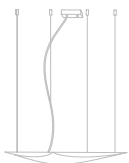
[Click here to download:](#)
3D/2D, pictures, photometric curves
and assembly instructions

SIMETECH® by arturo alvarez

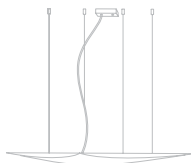
INTERIOR DESIGN
BEST OF
YEAR 2014
Innovative translucent shading
lighting solution



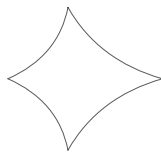
Kite Collection



KT04



KT04G



KT06G



KT06

MATERIAL FINISHES

LAMPSHADE

SIMETECH® by arturo alvarez

One color to choose



SUPPORT

Stainless steel

MOUNTING OPTIONS

Wall sconce & Ceiling flush mount

LIGHT SOURCE

120V - 60Hz

➤ T5 HO Bi-pin - 4x24 W

Dimming system: 0-10V

OTHER TECHNICAL DATA

PACKAGING

40,1x40,1x4,7in

22lb

ELECTRICAL FEATURES



CERTIFICATIONS



Kite

ref. **KT06G-D**

Suitable for indoor use, at 25°C

Apta para uso interior a temperatura ambiente de 25°C

Box contains | Contenido de la caja:

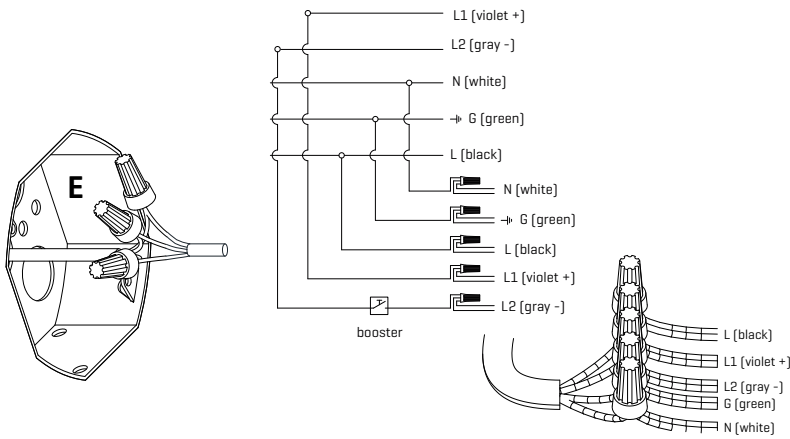
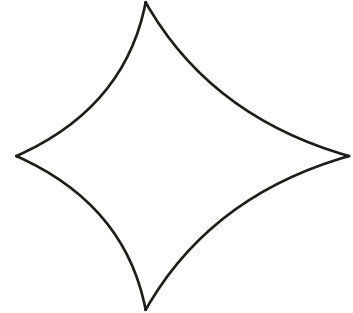
A - Lampshade | Tulipa [1]

B - Frame | Soporte [1]

C - Screws | Tornillos [4]

D - Wall Plugs | Tacos [4]

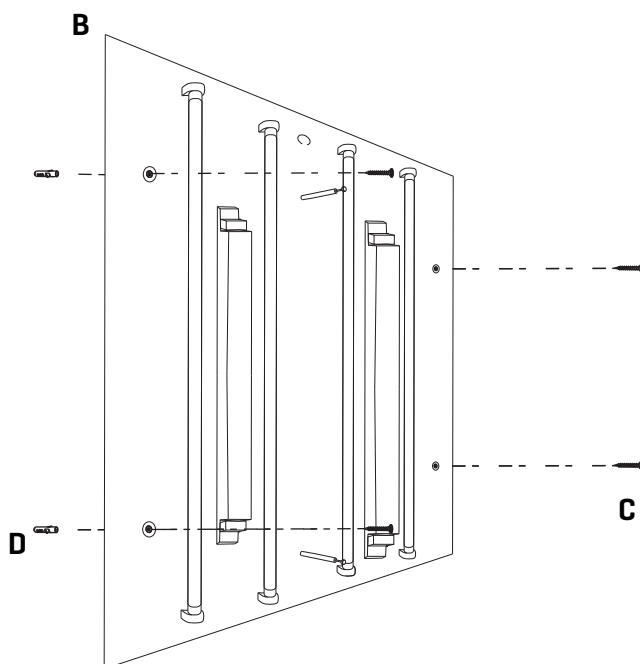
E - Electrical disposal | Ficha [5]



1

Pass the electric cables to the interior and do the electric connection inside the octagon box, please follow the instructions.

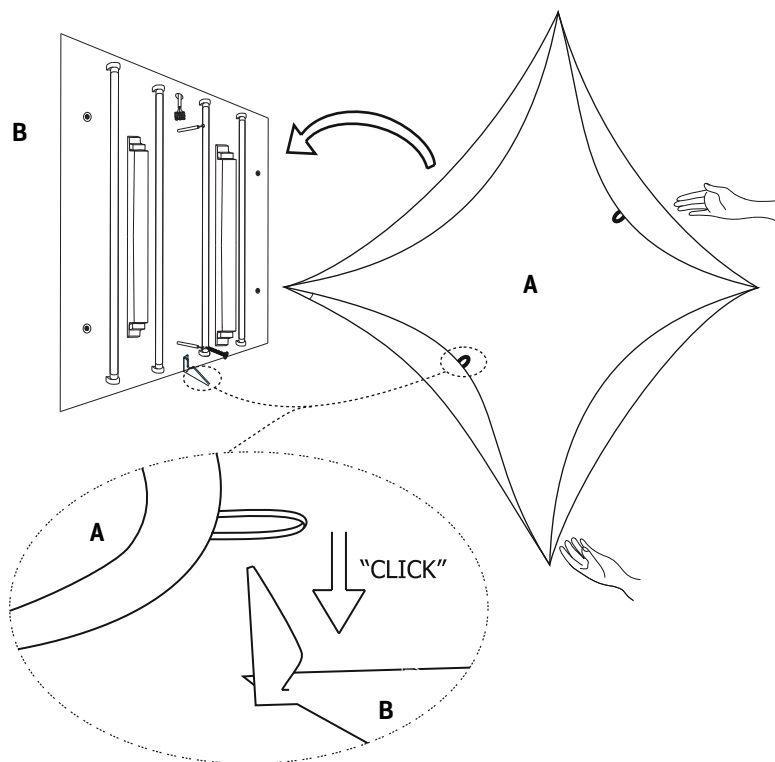
Passar los cables eléctricos al interior y hacer la conexión eléctrica dentro de la caja de conexiones, siguiendo las instrucciones.



2

In order to properly fix the support, put the horizontal line according to the sketch: be sure that the label is on the right [see drawing]. Drill the holes into the wall, fit the wall plugs into the holes and screw the support. Make the electric connection inside the electrical disposal.

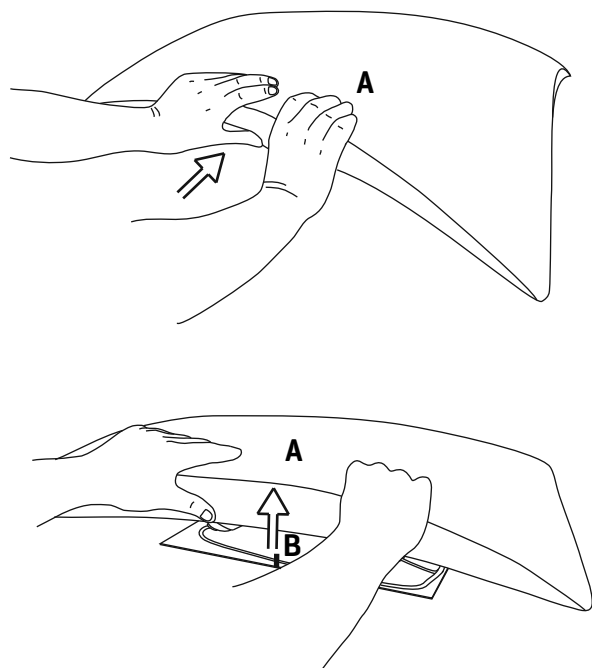
Para la correcta colocación del soporte, mantener la línea horizontal en la posición del dibujo, asegurándose de que la etiqueta queda a su derecha [ver dibujo]. Realizar los agujeros en la pared, colocar los tacos y atornillar el soporte. A continuación hacer la conexión eléctrica dentro de la ficha.



3

Fit the bulbs into the holders and fix the lampshade to the support by fitting together the lobe (e.g.,hook) and the coupling in the lampshade.

Colocar las bombillas en los portalámparas y posicionar la tulipa sobre el soporte, encajando los salientes del soporte en los enganches de la tulipa.



4

To pull the lampshade out, please thrust into the middle and then upwards (in both two coupling areas).

Para sacar la tulipa del soporte, empujar hacia el centro y luego hacia arriba (en las dos zonas de enganche).