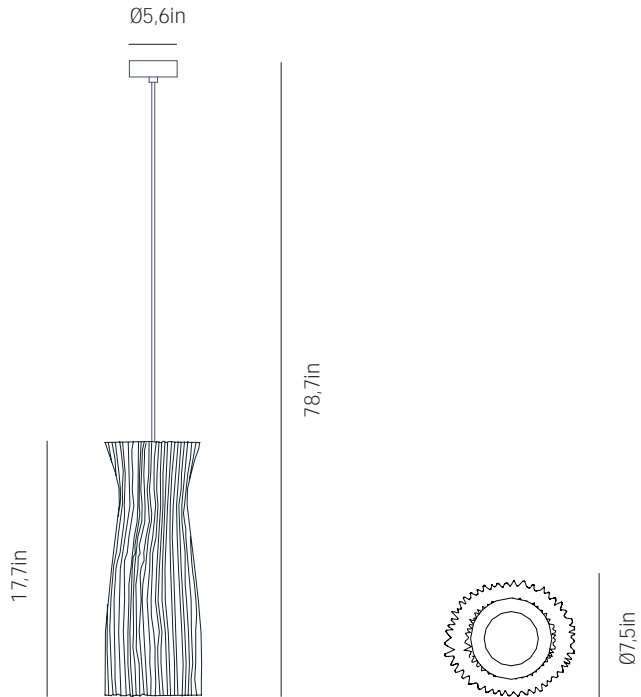


# a

by arturo alvarez

gea collection

LED



USA & Canada

ref. GE04-LD



GE03



GE04

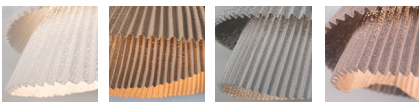


GE06

## MATERIALS & COMPONENTS

### LAMPSHADE

Painted stainless steel | One color to choose



BL

BE

G

T

CUSTOM  
COLOR

Bottom diameter

### CANOPY AND CABLE

Steel gloss nickel-plated

Transparent or black cable

Standard: 78,7in

Length customizable

### LIGHT SOURCE BUILT IN

**100~277V - 60Hz**

18,1W 3000K 1776lm built-in  
upon request 2700K 1645lm

Dimming system: 0-10V  
upon request PHASE CONTROL (only 120V)

## OTHER DATA

### NET WEIGHT

4,2lb

### PACKAGING

26x 12,6x 9,1in

5,8lb

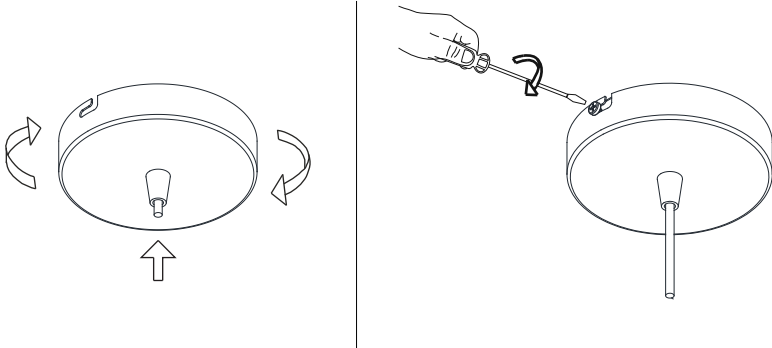
### ELECTRICAL FEATURES



### CERTIFICATIONS







## 2

Insert the canopy in the holding piece and tight the security screws.  
Tighten the strain relief situated on the canopy.

Insérer le baldaquin dans la pièce de serrage et serrer les vis de sécurité.  
Serrer le tendeur de câble situé sur le capot.

Encajar el florón en la pieza de sujeción y apretar los tornillos de seguridad.  
Apretar el tensor del cable situado en el florón.