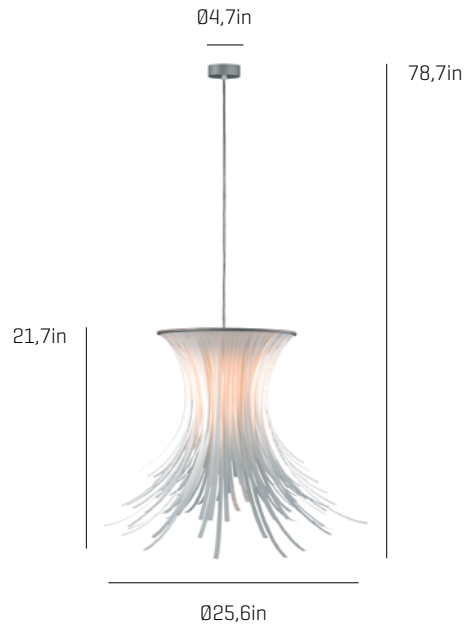


# Bety

ref. **BE04**

Pendant lamp

[Click here to download:](#)  
3D/2D, pictures, photometric curves  
and assembly instructions



## Bety Collection



## MATERIAL FINISHES

### LAMPSHADE

Polypropylene

One color



Stainless steel

### CANOPY AND CABLE

Steel gloss nickel-plated

Black or transparent cable

## LIGHT SOURCE

### 120V - 60Hz

E26 Med. - Max. 1x100 W

E26 Med. - Max. 1x42 W

E26LED - Max. 1x13 W

upon request:

GU24 - Max. 1x23 W

## OTHER TECHNICAL DATA

### PACKAGING

16,9x16,9x24,8in

5,1lb

### ELECTRICAL FEATURES



### CERTIFICATIONS



## Bety

ref. **BE04**

Suitable for indoor use, at 77°

Apta para uso interior a temperatura ambiente de 77°F

Box contains | Contenido de la caja:

**A** - Lampshade | Tulipa [1]

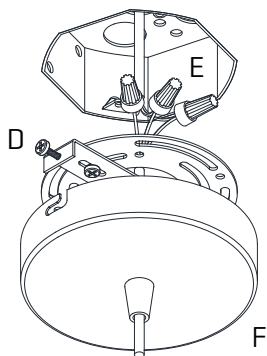
**B** - Holding piece | Pieza de sujeción [1]

**C** - Lampholder | Portalámparas [1]

**D** - Security screws | Tornillos de seguridad [2]

**E** - Electrical disposal | Ficha [1]

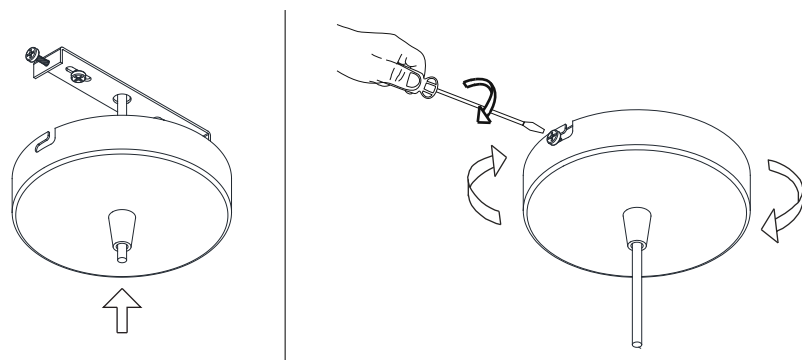
**F** - Canopy | Florón [1]



**1**

Pass the electric cables to the interior and do the electric connection, please follow the instructions.

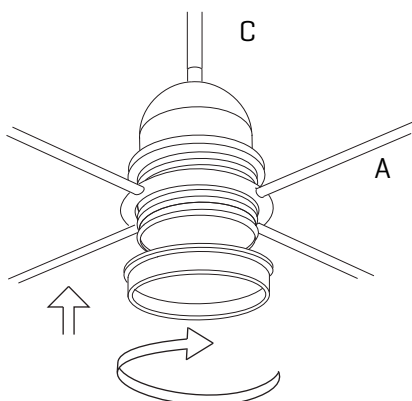
Passar los cables eléctricos al interior y hacer la conexión eléctrica dentro, siguiendo las instrucciones.



**2**

Insert the canopy in the holding piece and tight the security screws.  
Tighten the strain relief situated on the canopy

Encajar el florón en la pieza de sujeción y apretar los tornillos de seguridad.  
Apretar el tensor del cable situado en el florón.



**3**

Insert the lampshade into the lampholder and tighten the nut.

Encajar la tulipa en el portalámparas y apretar la tuerca.